



# ModernAg

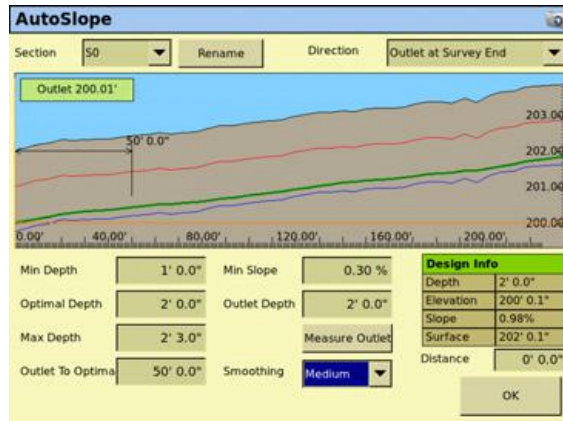
PRECISION SOLUTIONS

**“Your Kansas Precision Farming Headquarters”**

# About Us

- **Sister company of KanEquip Inc. covering Kansas and Southeast Nebraska.**
- **Exclusive Trimble Agriculture dealer for the State of Kansas.**
- **Offer complete Trimble portfolio including Water Management, Irrigate-IQ and GreenSeeker technologies.**
- **5 dedicated employees with over 45 years of experience and knowledge.**

# Trimble Water Management

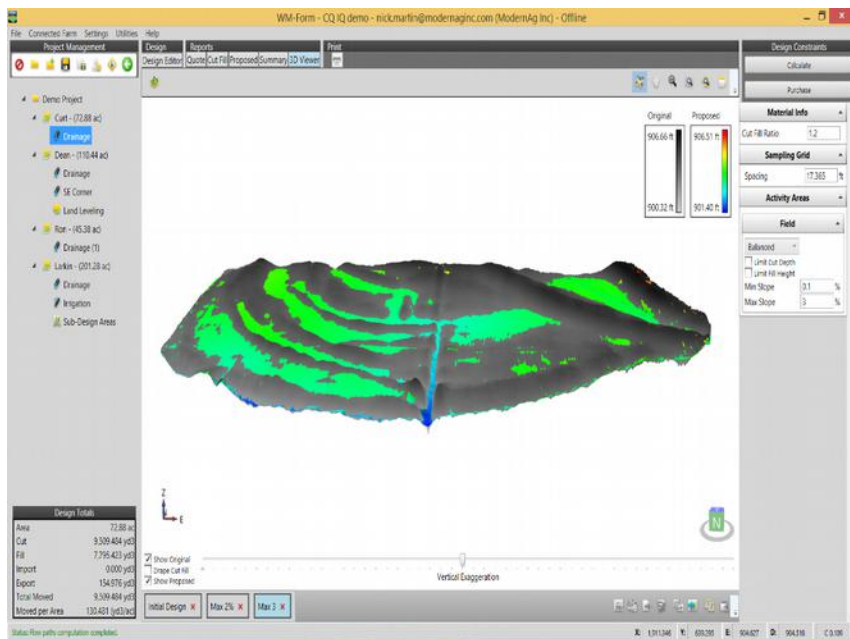


- WM-Drain for tiling, terraces, waterways and surface ditches.
- FieldLevel II for leveling and land forming.
- WM-Topo system for surveying and manual field work.

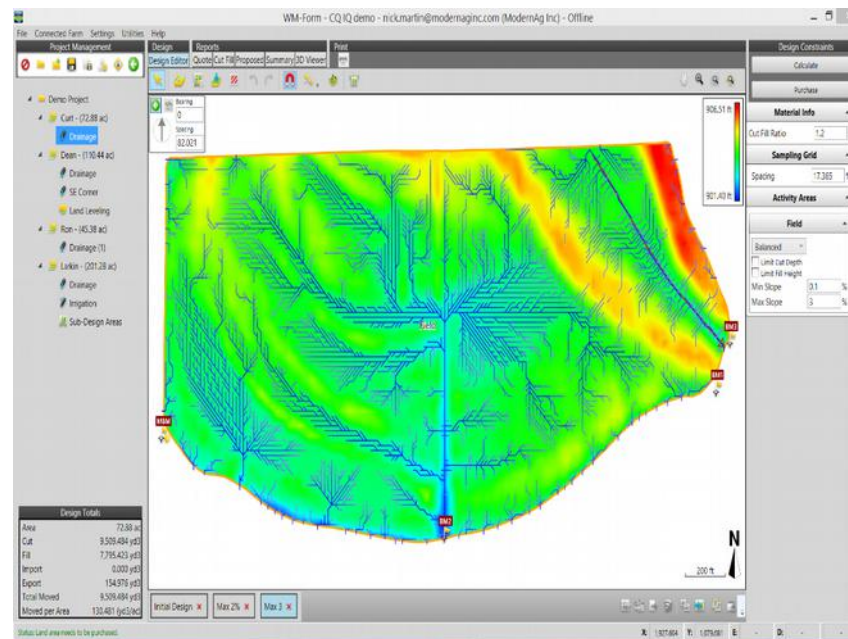


# WM-Form

## 3-D View



## Cut/Fill Design



# Water Management Services

- ModernAg offers survey and design services for your Water Management projects.
- Pinpoint problem areas in field and build a design to correct them.
- Load designs right into your Trimble display.
- Sync designs with NRCS for compliance.



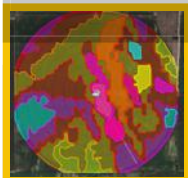
# Irrigate-IQ Solution



**Monitor**



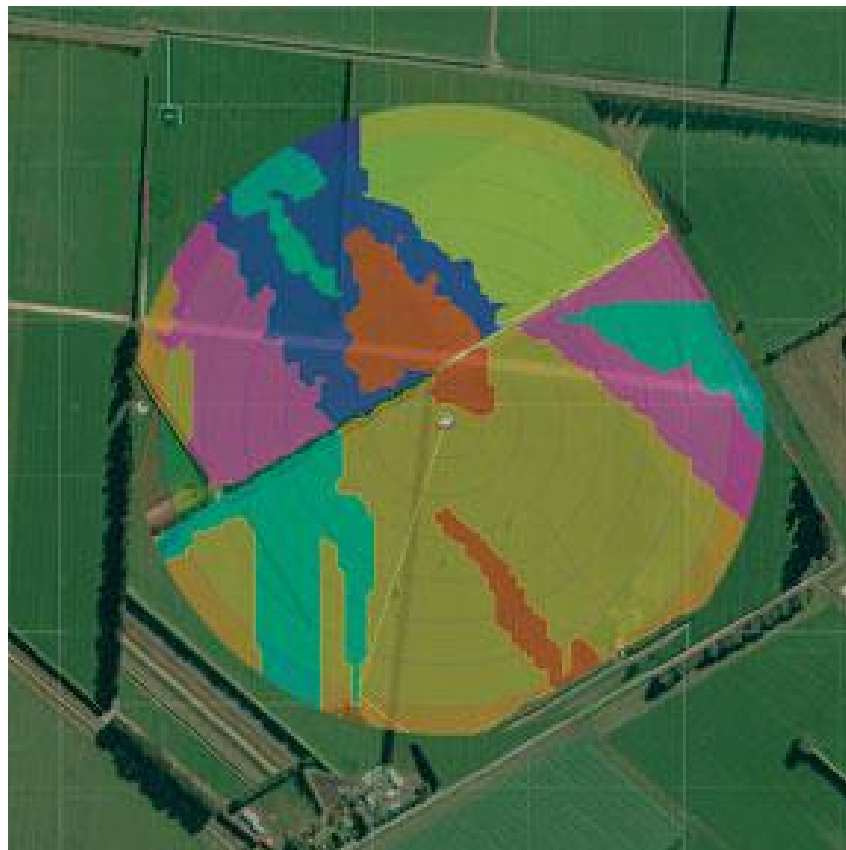
**Control**



**Plan**



**Apply**



# What is Trimble Ag Software?



Combination of 3 solutions into new leading edge tool

- Connected Farm (Office Sync + Fleet)
- Agri-Data (Agronomy + Mobile)
- Farm Works (Mapping + Accounting)

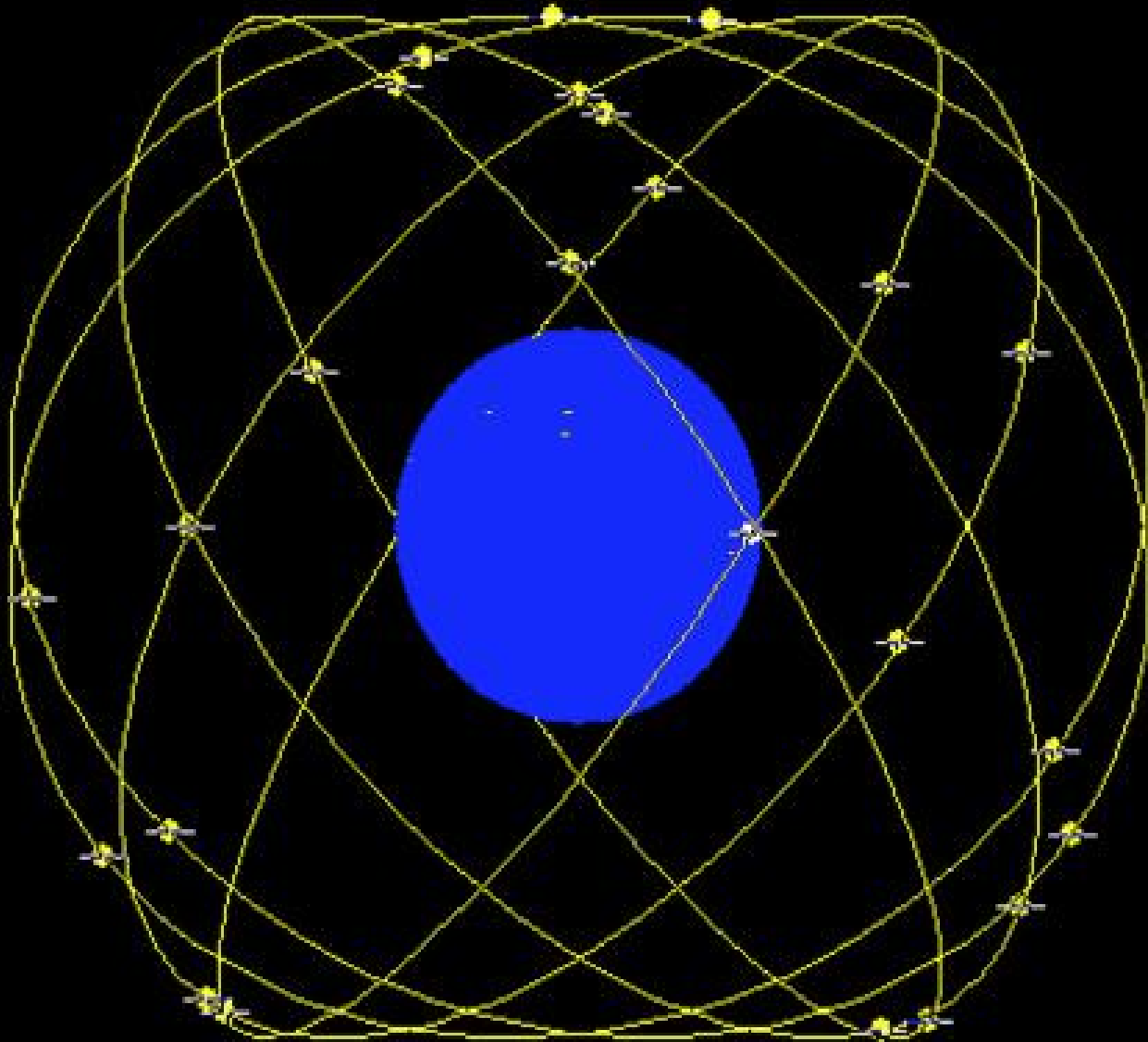
No other solution of its kind in the marketplace

# Trimble.com/GPSPlanningOnline

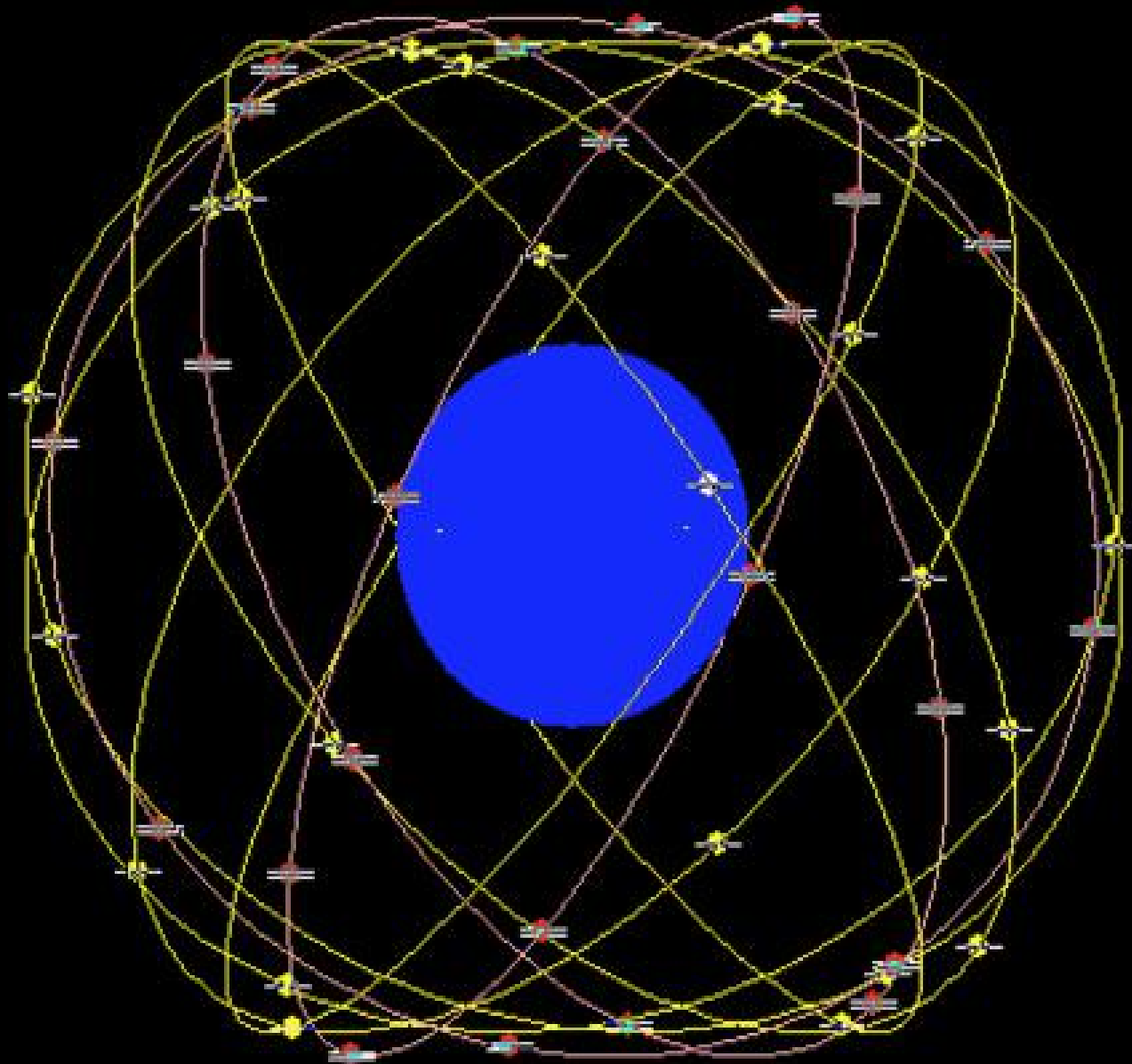




# GPS Satellite Visibility



# GPS + GLONASS Satellite Visibility



# GreenSeeker Handheld Promo

- **\$360 Promo Price**
- **Ends March 31st, 2017**



# Follow Us!!



[Facebook.com/ModernAgInc](https://www.facebook.com/ModernAgInc)



[@ModernAg\\_PS](https://twitter.com/ModernAg_PS)



[ModernAg Inc](https://www.youtube.com/ModernAg Inc)