

RADISHES IN WINTER WHEAT

Lee A. Scheufler
2013 KARTA Annual Conference



Is There a Yield Response to Seeding Radishes with Winter Wheat in Central Kansas?



Methods:

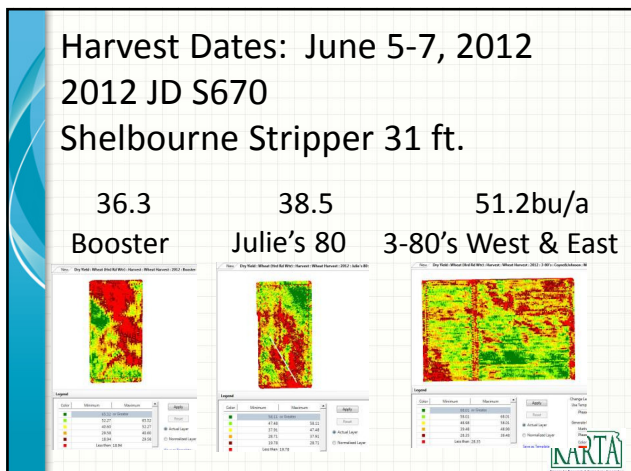
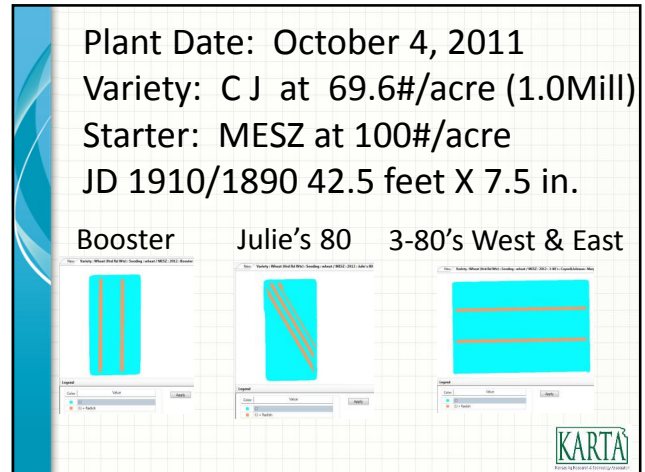
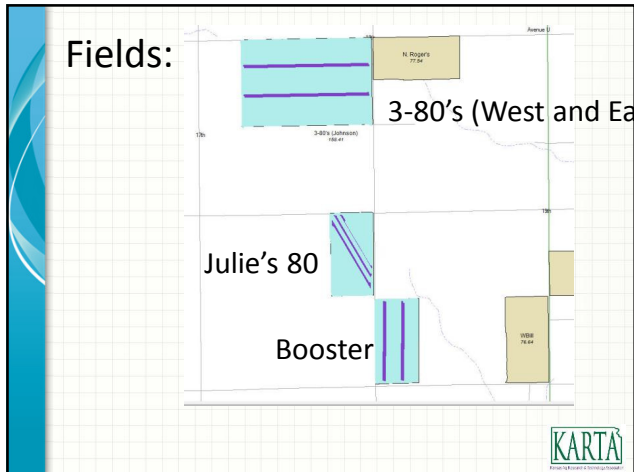
- Seed 3 fields with wheat, leaving one round unseeded.
- Load air seeder with mixture of wheat/radish
- Seed unseeded strips
- Harvest in usual manner (same guidance heading)
- Select yield data from combine swaths “with radish” and “without radish”
- Analyze and graph results for presentation



Field information

- No Till cropping since 2001. (W-W-dcS-C-M-S)
- Previous crop: wheat harvested with stripper header in June 2011
- Location: East of Sterling, Kansas
- Soil types: Cd (Carwile), Fa (Farnum), Nf (Naron), At (Attica)
- These are all fine sandy loams with slope 0 to 4% with “slickspots” of saline sodic soils.

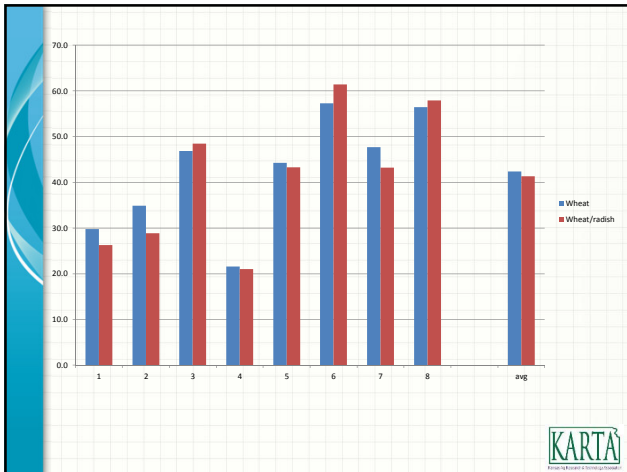




Summary of all trials wheat vs. wheat with Radishes:

			Wheat	Wheat/radish	Gain
Julie's 80	South set	1	29.8	26.3	-3.5
Julie's 80	North set	2	34.9	28.9	-6.0
Booster	West set	3	46.9	48.5	1.6
Booster	East set	4	21.6	21.1	-0.6
3_80_Julie	North set	5	44.3	43.3	-1.0
3_80_Julie	South set	6	57.3	61.4	4.1
3_80_Boston	North set	7	47.7	43.2	-4.5
3_80_Boston	South set	8	56.5	57.9	1.4
	avg		42.4	41.3	-1.1

KARTA



Observations

- Good planting conditions, excellent stand establishment
- We never found any live radishes
- We avoided using any weed control until well after winterkill of any potential radishes

Summary

- Radish seeding was widely promoted at No Till conferences in 2011.
- Most of this was based on anecdotal evidence.
- We found no positive response. In fact, we observed a negative yield response.

Limitations

- This is only one year of observations.
- This is not a replicated study.
- Some additional validity may be obtained by comparing 2012 yield with a site-specific historical yield. No effort was made to make this comparison.

