



**AgriSolutions Ascend In
Winter Wheat
-A Plant Growth Regulator**

**18th Annual Kansas Ag. Research & Technology
Association (KARTA) Conference
January 22 and 23, 2015
Salina, Kansas**

www.kartaonline.org



**Kastens Inc. Farms
Rawlins County, Kansas
28339 Rd BB
Herndon, KS 67739
www.kastensinc.com**

Overview

- AgriSolutions Ascend is promoted as a plant growth regulating product that is effective in increasing root mass and volume. This increased mass/volume are able to increase the uptake of water and nutrients, thus increasing yields.
- Wheat seed was treated pre-plant at a rate of 4 oz/bushel, and planted at a rate of 65 lbs/ac.
- <http://www.winfield.com/Products/ProductCategory/ProductDetail/ECMD2-0058473>

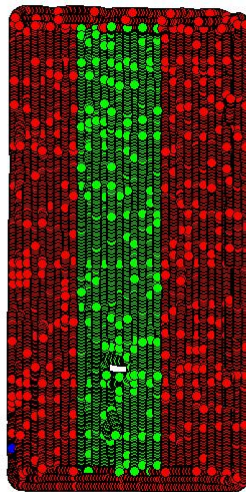
Overview

- Strip trials were used in 2014 to evaluate Ascend seed treatment.
- Number of replications per year:
 - 2014: Year 1, 6 replications across 3 fields

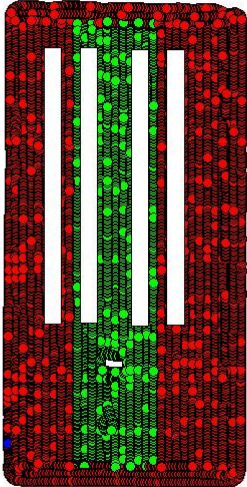
Procedure

- As with most of our product testing on wheat ground, a side-by-side strip trial was accomplished. The length of the test strips range from 3.4 to 4.5 acres.
- Yields from the MPGM yield coverage (60' grids) were used along with planting data to build the database.
- Analyses were performed in Excel.

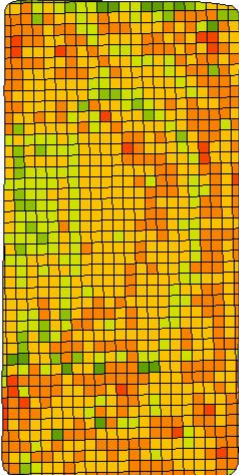
Planter Data



Planter Data With Test Plots



Yield Data processed with MPGM approach



Results 2014

				26.79	26.00	0.79
Field	Pop (lbs/ac)	Rep size (ac)	Rep	Ascend (bu/ac)	Control (bu/ac)	Adv Ascend (bu/:
A	65	4.5	1,2	29.02	23.47	5.55
A		4.5	3,4	27.84	25.34	2.5
B	65	3.4	1,2	17.34	19.26	-1.92
B		3.4	3,4	16.44	18.06	-1.62
C	65	4.13	1,2	32.47	32.86	-0.39
C		4.13	3,4	37.65	37	0.65

Table shows all reps. Total observations = 6

Conclusions

Our 2014 wheat crop was severely impacted by drought, so not shocked that we saw no difference.

2015 Plots were put in during the fall of 2014. The goal is to conduct this research through 2016; hopefully capturing a “wet” year, and “average” year to go along with our drought year data.

Questions?

Thanks to the KARTA group for funding this project