

Wheat Seeding Rate

TYLER RIDER

2015 KARTA CONFERENCE

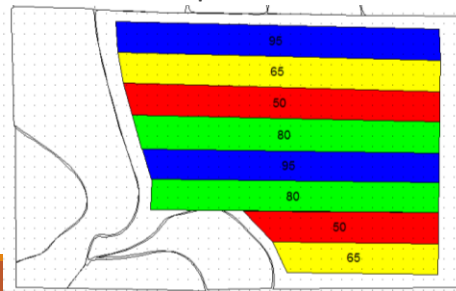
Wheat seeding rate

Historically planted at average 72 lbs/ac

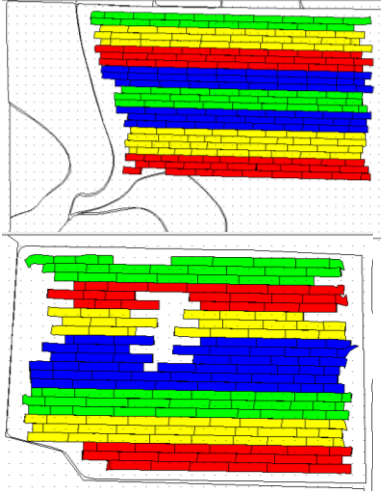
- Setting is actually 65 lbs/ac
- Lots of point rows when planting w/ contour

Is this the correct rate for our farm?

Planted 50, 65, 80, 95 lbs/ac strips



Procedure



Planted TAM 112

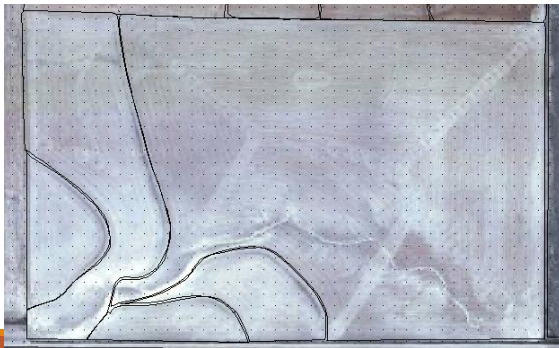
- Field 1 9/23/13
- Field 2 9/21/13

Harvested 6/20/14

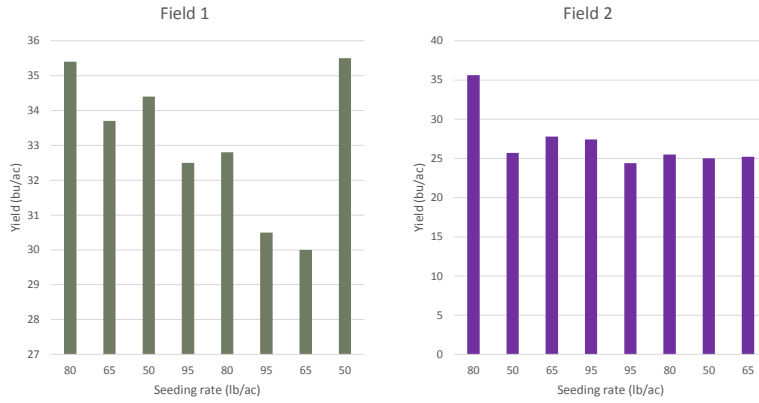
- Yield data collect w/ John Deere Greenstar 1
- Field 1 33.44 bu/ac average
- Field 2 27.9 bu/ac average

Yield editor used to clean yield data

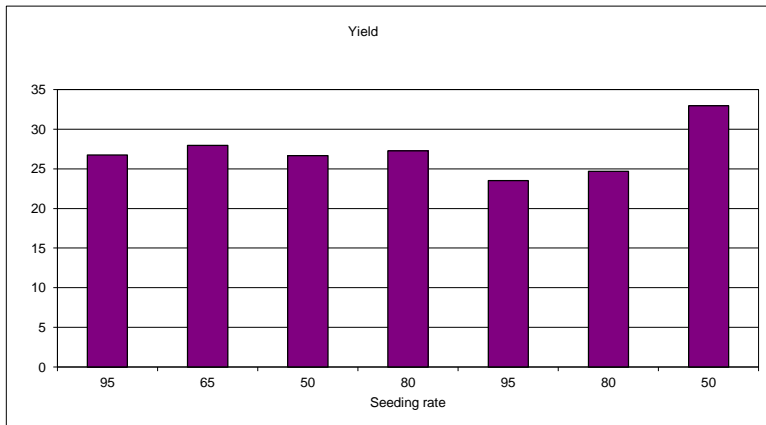
Sample selection



Analysis



2012



Conclusions

Not going to change seeding rates

- No large difference in yield
- Would increased moisture change results

Not backing up data is a mistake

Thanks KARTA

Milo seeding rate study

KSU on farm research initiative

- Does it fit with KARTA
- Increased number of cooperators improves data
- Is standard 30,000 seeds/ac correct
- Should we be VRS

Procedure

Planted 6/6-6/8/2014

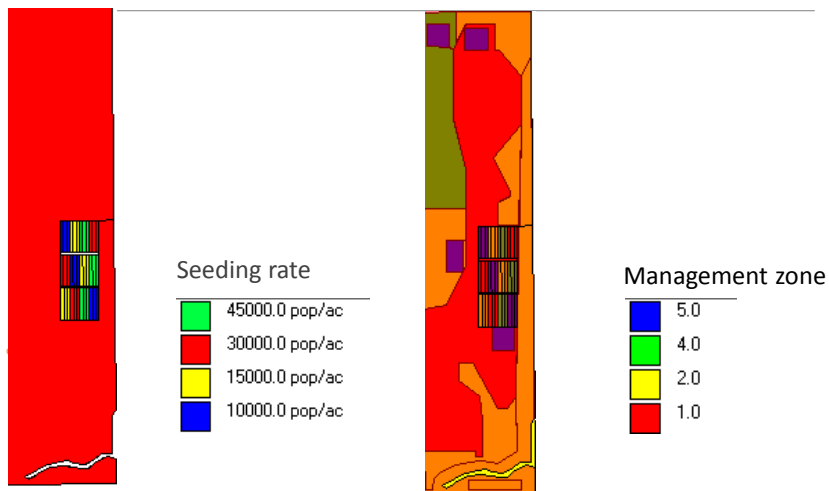
- Pioneer 86G32
- Tillering hybrid
- 12 row 1770 JD planter

Plots harvested on 10/17-10/18/2014

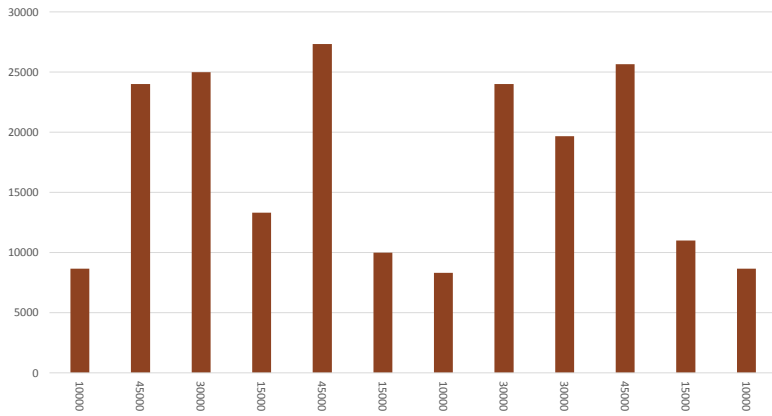
- 936D JD platform
- Yield data collected with GS2

Yield data cleaned using Yield editor

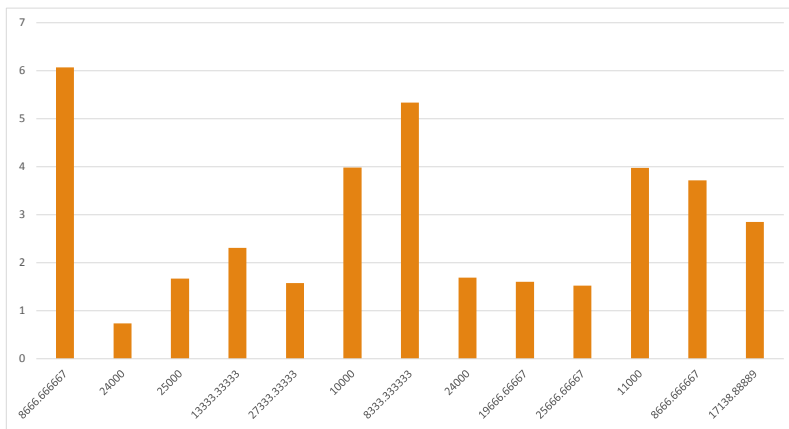
Study layout



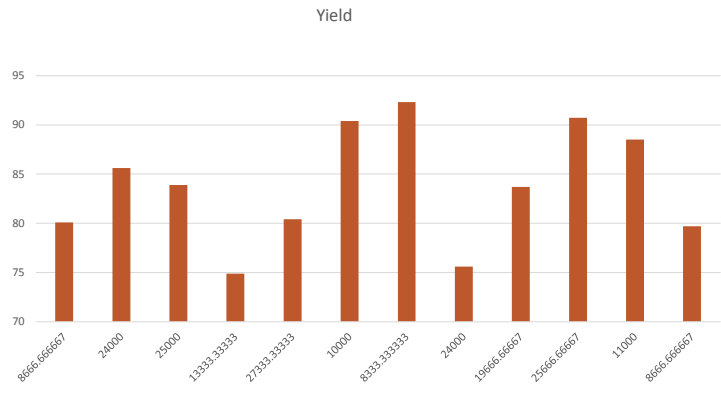
Population (plants/ac)



Heads/plant



Analysis



Conclusions

On our farm hard to change after just this year

- If you know it will be a dry year, could cut pop
- We didn't hit the upper population
- Could have impacted rates

Being part of KSU initiative eases pain of doing on farm research

Questions

